

Org™ makes Organization Charts

Org is a program that automatically formats and draws your organization chart, dramatically reducing preparation time. As you enter the names of managers and their subordinates, Org obtains all the information it needs to produce complex organization charts. Org draws the boxes and connecting lines with perfect spacing. All text is centered in the appropriate box.

Highlights

- An easy to use, full screen interface shows a single work group (one manager and his or her subordinates) at any given time. You can move around your chart on screen, position-by-position, to any other work group. You can also move directly to any other work group by selecting a name from an alphabetical index.
- A preview feature shows a map of your entire organization chart at any time.
- Each position can have a name, title, and comment up to 25 characters in length.
- Several types of employees can be specified:
 - Standard (down one level from manager)
 - Staff level
 - Removed (more than one level from manager)Employees can be connected to their manager with a solid, dotted, or no line
- The following editing functions allow fast revision of a chart as the organization changes:
 - Insert position
 - Delete position (or branch)
 - Move position (or branch)
 - Save part of chart to disk
 - Append chart from disk
- Org also gives you control over the format of your chart:
 - Print all or just part of the chart at once
 - Print with or without boxes
 - Print any combination of the positions' name, title, and comment
 - Specify an optional chart title, subtitle, and footnote of up to 35 characters
- Chart limits:
 - Maximum number of positions: 250 (with 192KB of memory)
 - Maximum number of subordinates for each manager: 16
 - Maximum number of levels in a chart: 99
 - Maximum printed size: 11 x 14 inches
- You can choose to let Org automatically shrink charts that are too big to fit in the size you request. This is done by formatting the individuals at the lowest level of the chart in a vertical list under their managers. Org will also use abbreviations in place of full names as necessary.
- Org automatically obeys rules of organization chart protocol. People at the same level of the chart are always treated in the same manner.
- Commands can be performed using the function keys or from a pop-up menu.
- Context sensitive help is available at any time by pressing F1.
- Detailed error messages tell you exactly what you can and cannot do.

Installation/Operation

Org is not copy protected. It can be run from either a fixed disk or a diskette.

Packaging

Org is distributed with one double-sided diskette and a User's Guide.

Prerequisites

- IBM PC, PCjr, PC XT, PC AT, Portable PC or 100% compatible computer. Org has been successfully tested on the following compatibles: AT & T 6300, Compaq, Heath/Zenith 150/160, Panasonic Sr. Partner, Tandy 1000, and Tandy 1200HD.
- 192KB of memory (special version included for 128KB systems except PCjr, this version has a capacity of only 50 positions).
- 80 column display (monochrome or color)
- One double-sided diskette drive
- DOS Version 2.0 or higher
- Any printer with a Centronics parallel interface (a printer that connects to the IBM Printer Adapter). Even daisy-wheel and other non-graphic printers can be used. Some printers, including all non-graphic printers, will print dashed ---- lines, not solid.

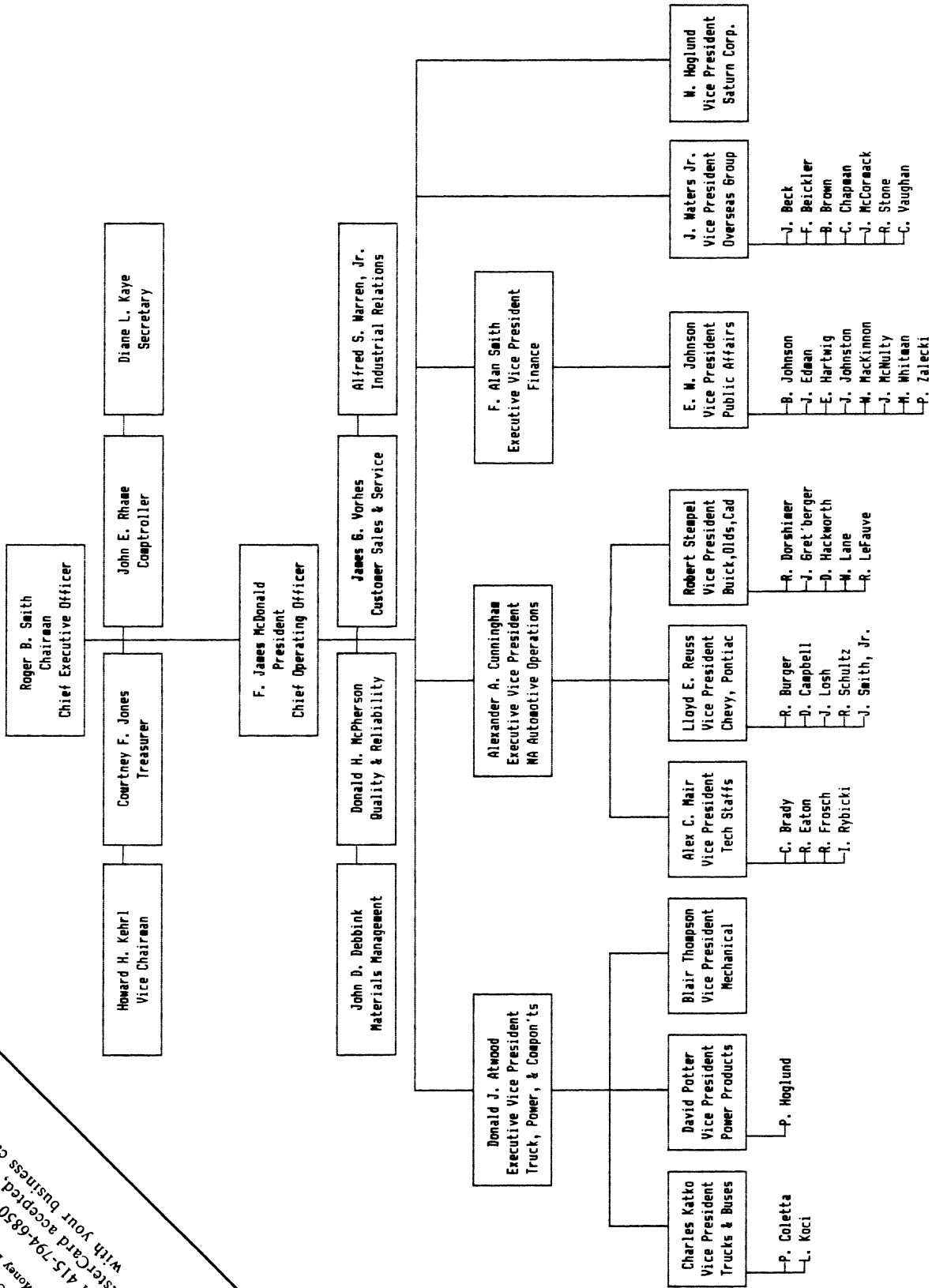
Support

Telephone support is included at no additional charge.



P.O. Box 7865
Fremont, CA 94537
(415) 794-6850

General Motors Corporation
Based on the 1984 Annual Report



* \$5.00 shipping, CA res add \$4.75 sales tax
\$69.95
 30 Day Money Back Guarantee
 Call 415-794-6850 to Order
 VISA / MasterCard accepted, or send a check
 with your business card